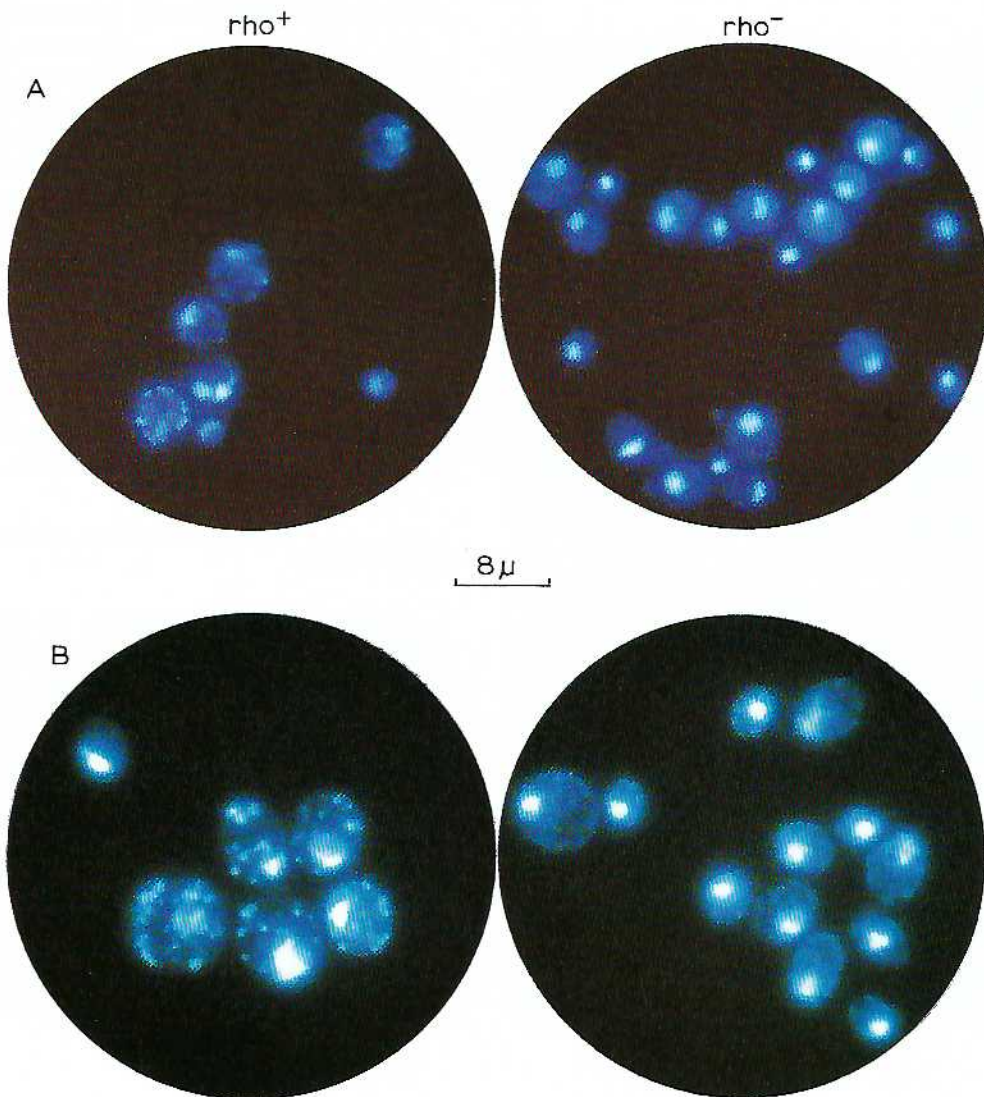


1



2

rho⁺ to *rho*⁻ and/or stability in the case of the improvement in 10 months on killer activity, because all of the killer-negative

The industry showed a different increase in yield conversion, but in 10 months. On K₁⁺ with we above experim electroinjection did not result stability, but double transf activity (Table 1).

Other hap (e.g. AS.4/H₂) tants (e.g. AS.4 a *pet 18* mu increase in the the generate months. Elec AS.4/H₂-PC strain AS.4) (Table 1).

The result that deletion improves the transform were also ob strains and n been differ *rho*⁺ cells a

Fig. 1. Petri dishes showing growth of AS.4/H₂ strains: strain [rho⁺], strain [rho⁻], strain *carlsbergensis*.

Fig. 2. Fluorescence microscopy of *carlsbergensis*.